

# TOPGRASS Bulletin

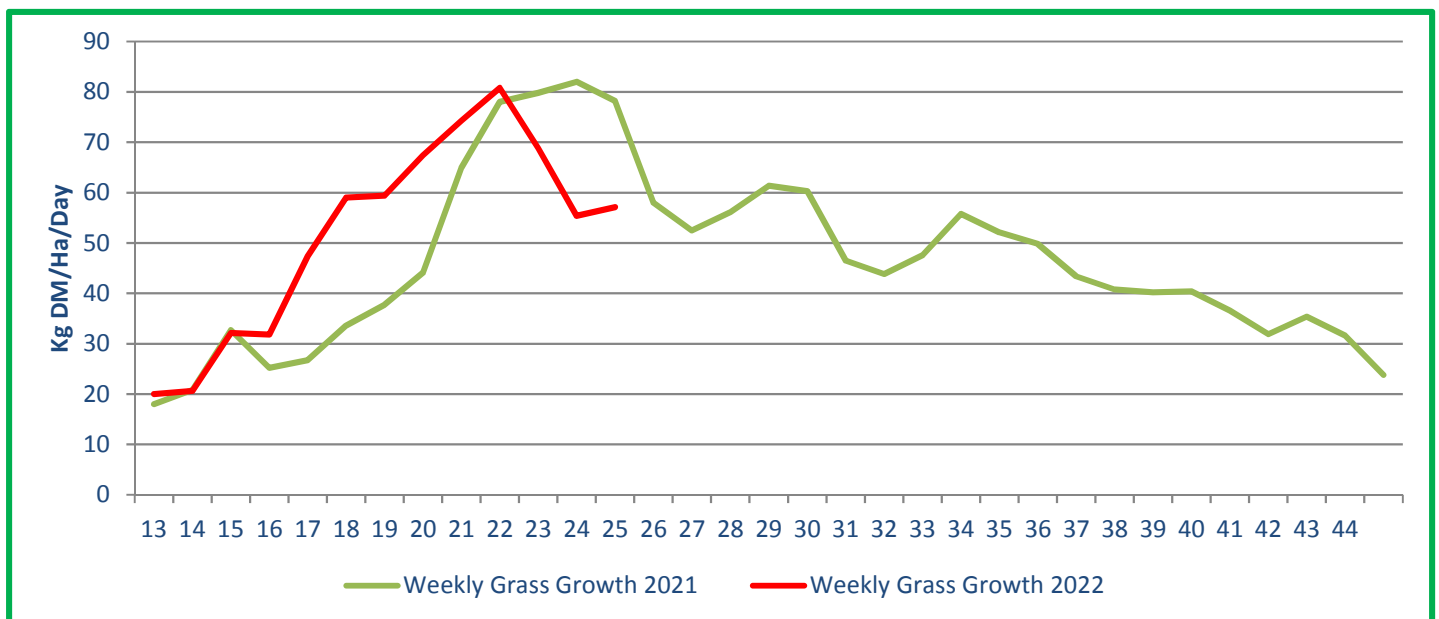


## Regional Grass Growth Guide



	Kg DM/Ha/Day			
	Last Week	This Week	Difference	
Scotland	65	61	-4	↓
North East	61	62	1	↑
North West	59	63	4	↑
Yorkshire	63	59	-4	↓
East Mids	55	52	-3	↓
East	44	60	16	↑
West Mids	47	51	4	↑
Wales	53	56	3	↑
South West	57	57	0	↑
South East	50	50	0	↑
<b>GB Average</b>	<b>55.4</b>	<b>57.1</b>	<b>1.7</b>	<b>↑</b>

## National Average Grass Growth Guide

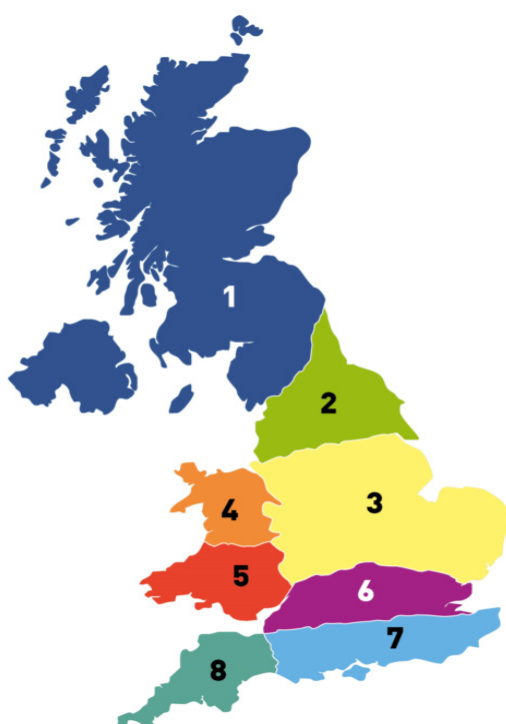


# TOPGRASS Bulletin



## Regional Grass Quality Guide

	Dry matter	MELK	TDP	RFC	ME	Sugar	NDF	Oil	Protein
	%	/kg DM	g/kg DM	g/kg DM	MJ/Kg DM	%DM	%DM	%DM	%DM
1	14.1	969	103	160	12.0	13.5	48.8	3.7	21.8
2	16.7	807	66	113	11.3	8.3	47.6	3.1	13.4
3	20.8	855	76	143	11.1	12.0	48.9	3.0	14.6
4	18.4	971	102	141	11.1	11.0	55.8	3.3	20.6
5	17.3	871	82	139	11.8	11.4	45.1	3.4	17.1
6	23.0	844	71	122	10.9	9.8	56.1	3.1	13.7
7									
8									



	Last week Average	This week Average
Dry Matter	18.8	19.0
MELK	875	874
TDP	79	81
RFC	153	136
ME	11.5	11.5
Sugar	13.3	11.0
NDF	49.9	47.9
Oil	3.1	3.3
Crude Protein	15	16.7
it3	6	6.8
Nitrates	0.016	0.059

### Potential Milk from Grazing - This week

Fresh Grass Intake	(Kg/day)	40	45	50	55	60	65	70
Dry Matter Intake	(Kg/day)	7.6	8.6	9.5	10.5	11.4	12.4	13.3
Milk From Grazing	(Litres/day)	1.5	3.7	5.9	8.0	10.2	12.4	14.6

### Cattle Supplementation Required

Animal Weight	(Kg)	200.0	300.0	400.0	500.0
DLWG	(Kg/day)	0.8	0.9	1.0	1.2
Fresh Grass Intake	(Kg/day)	15.8	21.1	26.3	36.8
Dry Matter Intake	(Kg/day)	3.0	4.0	5.0	7.0
Concentrate Required	(Kg/day)	3.4	2.2	3.1	3.8

